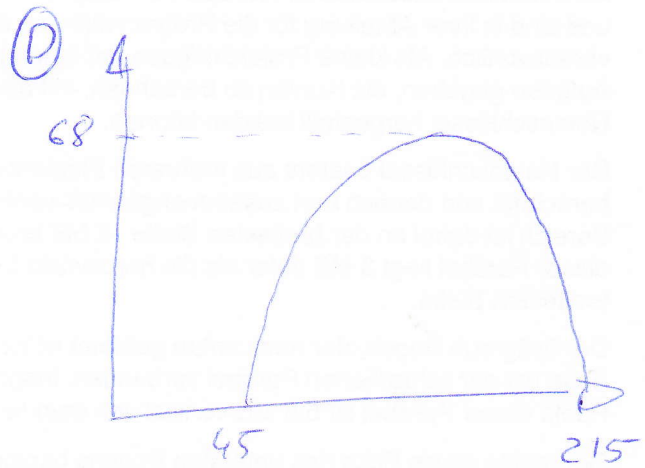
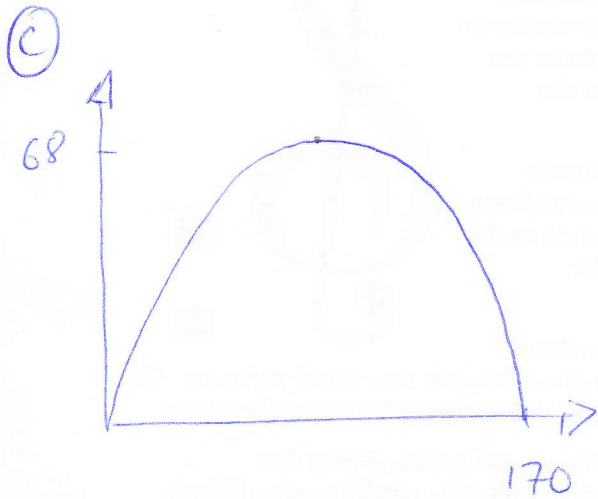
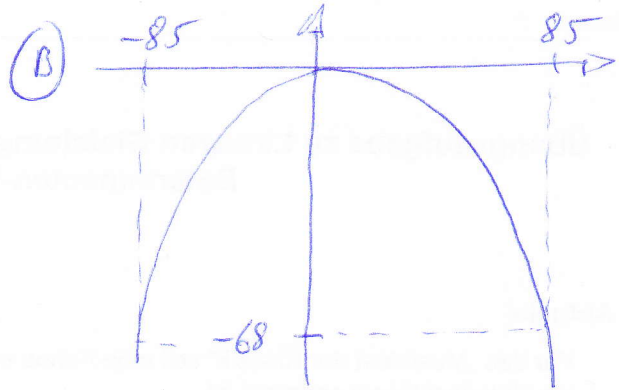
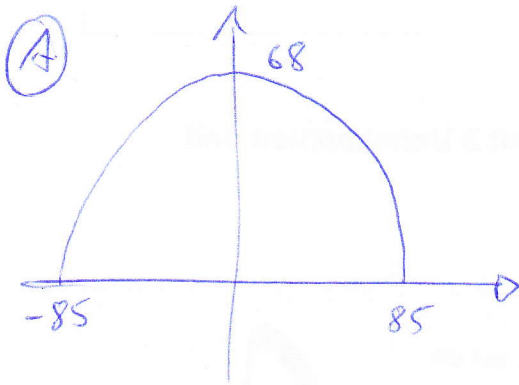


Mögliche Modellkennze der Brückenkonstruktion



Lösungen zu

A) $D = 1228250$ $D_1 = -11560$ $D_2 = 0$ $D_3 = 83521000$ $a = -\frac{4}{425}$ $b = 0$ $c = 68$

B) $D = 1228250$ $D_1 = 11560$ $D_2 = 0$ $D_3 = -83521000$ $a = \frac{4}{425}$ $b = 0$ $c = -68$

C) $D = 1228250$ $D_1 = -11560$ $D_2 = 1965200$ $D_3 = 0$ $a = -\frac{4}{425}$ $b = \frac{8}{5}$ $c = 0$

D) $D = 1228250$ $D_1 = -11560$ $D_2 = 3005600$ $D_3 = -111843000$ $a = -\frac{4}{425}$ $b = \frac{208}{85}$ $c = -\frac{1548}{17}$